

Newsletter

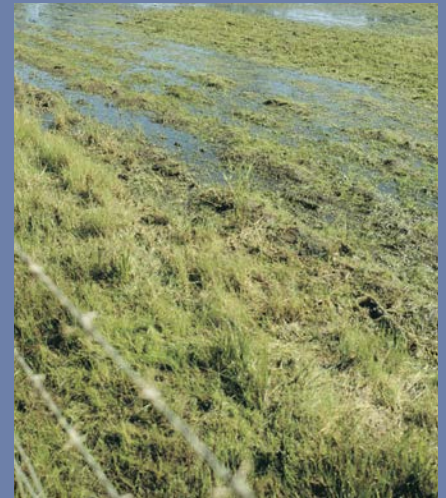


Wet, wet, wet

It's been an amazing 3 years in a row with above average rainfall. Something that we haven't seen before.

Even though we always enjoy receiving rain, when you get this much, it brings its own challenges and experiences. Our sheep have stood up to these conditions very well considering what they have been through this year.

Lambing is in full swing with lots of twins already running around.



These wet conditions have also been difficult on our cropping and pasture establishment program with many of the paddocks not being sown. On the plus side, there is a great deal of grass for our lambs and we are set up for a promising spring.

The progress of our sheep keeps improving each year where we are producing high value wool and meat sheep that are ethically maintained.

Our non-mulesed practice is rewarding us by receiving better prices when selling our clip. Non mulesed sheep and wool are being more and more sought after.

2021 Ram Sale Results

Extracts from the Wellington & District Leader
Best sale yet for Bella Lana Poll Merino

Buyers keep returning to buy, many saying they like the depth of the Bella Lana sheep and their heavier-cutting wool traits.

The sale cleared all 141 rams at auction to an average of \$3 132, an increase on last year of \$640 while last year the average increased by \$556 on 2019.

Buyers registrations on the day tallied 38 while AuctionsPlus purchased 19 rams for buyers online, many from Victoria.

Returning to their fourth sale, the Cosgrove family, West Charlton, Rockley, paid \$10 000 each for two rams, the top money of the sale.

Robyn Cosgrove said the family run some 7 000 breeding ewes of merino and crossbreds ewes, plus 700 cattle in a crossbreeding enterprise on several properties.



John Settree, Anna, Scott, Hannah Brien, Robyn Cosgrove and Brad Wilson with the two top priced rams- each \$10 000 purchased by Robyn Cosgrove

The merinos are cutting some six kilograms of an average 18.5 micron wool and will join the two new sale-toppers to Bella Lana-blood ewes of two to three generations.

Warren Leeson and family, Anglewood, Dunedoo, purchased three rams averaging \$5583. Warren said these sheep did well at Anglewood and have increased his wool cut. *"The rams have lifted my lambing percentages from about 95% years ago to this year at 142% at marking,"* he said.

Dugald and Lachlan Campbell, Wellington, secured 22 rams with an average of \$2648.

"We return each year as we can see the improvement in the Bella Lana with each year, especially the depth of quality," Dugald said.

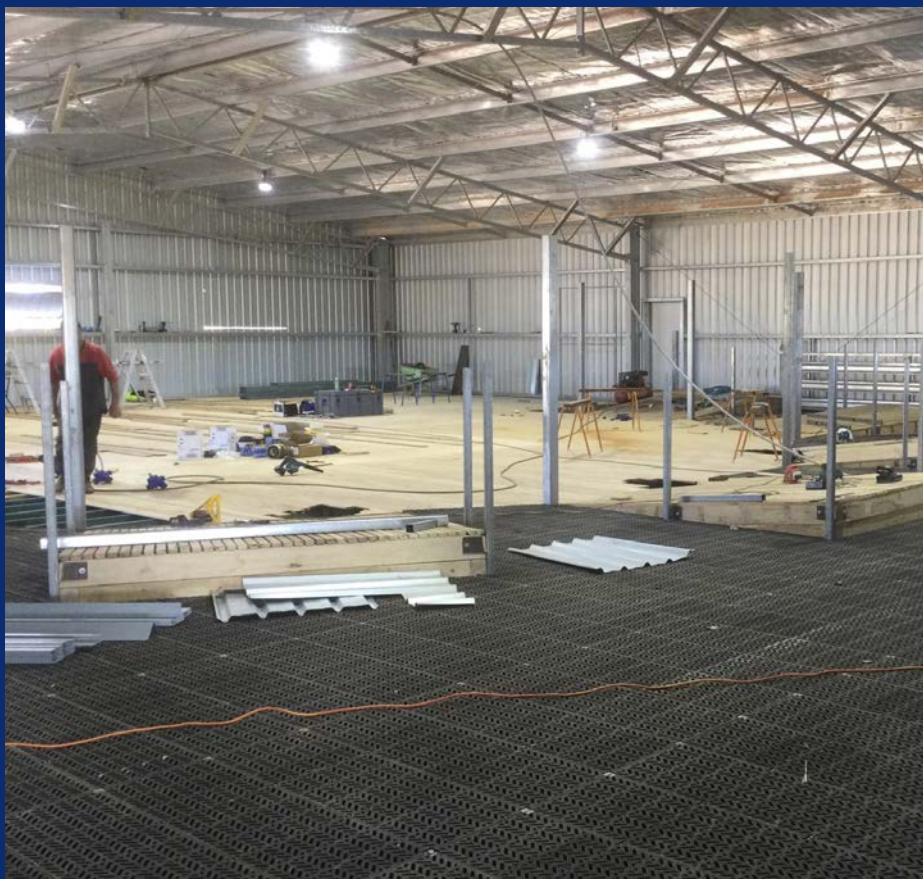
Tom Roberts of Bestwick Pastoral, Euarra. O'Connell, returning to buy eight rams while paying an average of \$3125.

Phil and Ed Hunter, Minnamuurra, Yeoval, bought 12 eams for a \$2563 average.

First-time buyers were the Corio Ag enterprise at Tarlo Station, near Taralga, paid an average of \$4227 for 11 rams.



Bella Lana Poll Ram Auction 2021



Investing in the future

With a little bit of organising, we decided to build a new shearing shed with cover over our yards and a new skillion for our ram sale.

We hope by building the new shearing shed that it gives staff better working conditions, we can entice more workers into the industry and prolong their working careers.

The cover over the yards will also make working sheep even more enjoyable.

The shed is built to the AWI blueprint which incorporates the best in shearers', shed hand and animal welfare. We would be happy to show anyone around who is interested.

Jason Mcgaw- Driftway, and his team have done an amazing job with the fit out.

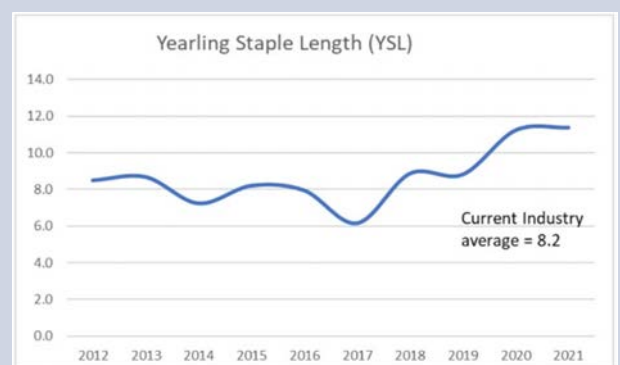
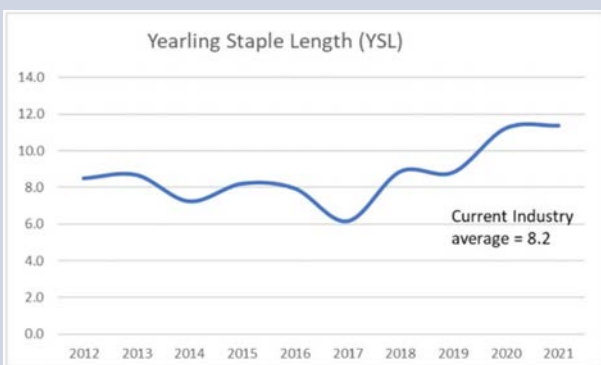
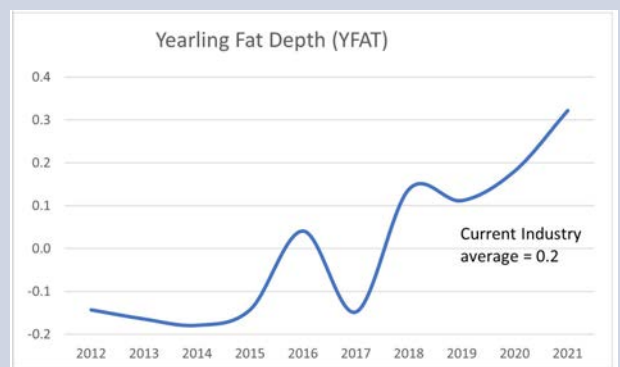
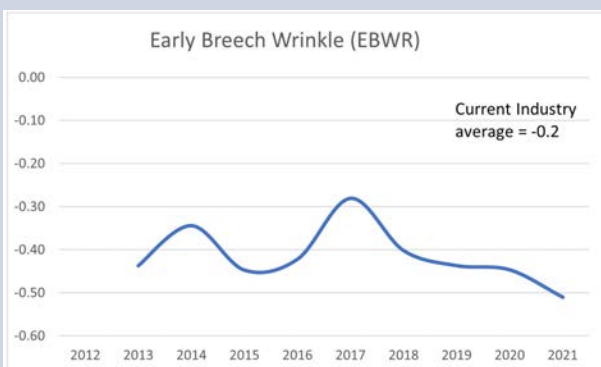
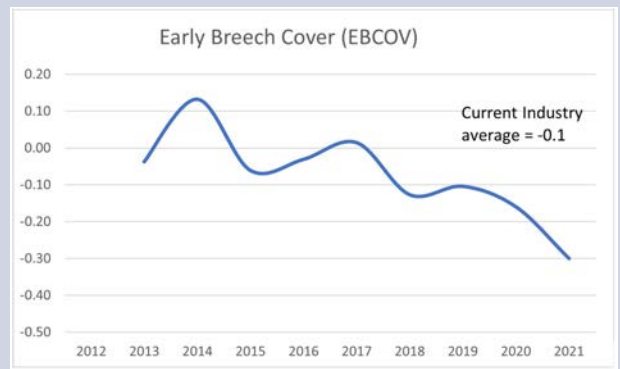
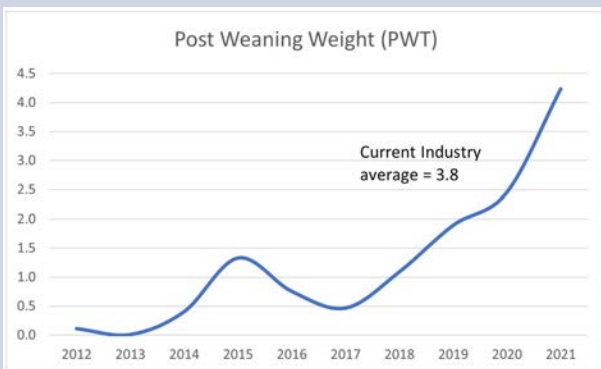
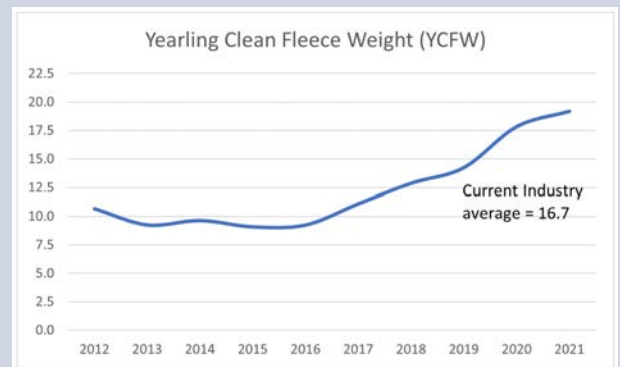
ASBVs

Our 2021 drop is above industry average for ASBVs in the following traits:

- Breech Wrinkle - EBWR (top 30%)
- Breech cover (top 30%)
- Yielding Fat Depth -YFAT
- Clean fleece weight - YCFW
- Post weaning weight - PWT
- Yearling weight - YWT
- Staple length - YSL (top 30%)
- Dual Purpose Plus Index - DP+

As evident from the following graphs, Bella Lana's genetic trend has been on a steady incline. We are not chasing extremes but we have a balanced approach to our breeding.

We have not taken our eye off the visual traits that we are renowned for and are pleased to continue producing a well - balanced sheep for both wool and carcass traits increasing the profits for our clients.



New additions- our first grandchild!

Sarah and Neale have welcomed their new baby, Matilda Dawson who is the delight of everyone who meets her. We are loving being grandparents and are lucky to have them so close to us.



Jane is now working full time at Bella Lana. Jane and Hayden announced their engagement and their wedding date is next February. We are very excited for them in their next chapter of their life together.

Hannah has moved to continue her degree in Sustainable Communities at Wagga. Even though she is disappointed by not being here to oversee the progress of the farm and rams, she is enjoying her stay at Wagga.

The Peter Westblade Scholarship

Bella Lana Poll Merino Stud is a long standing supporter of the Peter Westblade Scholarship.

This scholarship is an amazing initiative which supports new leaders in the sheep and wool industry.

We are pleased to again be offering a \$2500 voucher to purchase a ram at this year's auction.

Richard and Isabell Harry, Gidleigh Station, Bungedore, were the successful purchasers of the voucher last year and we thank them for their support.

The voucher can be purchased through AuctionsPlus from 30 August - 2 September 2022. Your support is greatly appreciated.



PROVIDING OPPORTUNITIES TO THE NEXT GENERATION
OF LEADERS IN THE SHEEP AND WOOL INDUSTRY

Upcoming Dates

TUES 30
AUGUST

Display at South West Slopes

TUES 6
SEPTEMBER

Bella Lana Open Day

- 10am - 4pm

All sale rams will be on display for inspection

WED 21
SEPTEMBER

On-Property Ram Sale

Wednesday 21 September

- Inspection 10am
- Sale 1pm

Sale is interfaced with Elite Stocklive Auctions.

150 rams on offer. Grades available after the sale.

